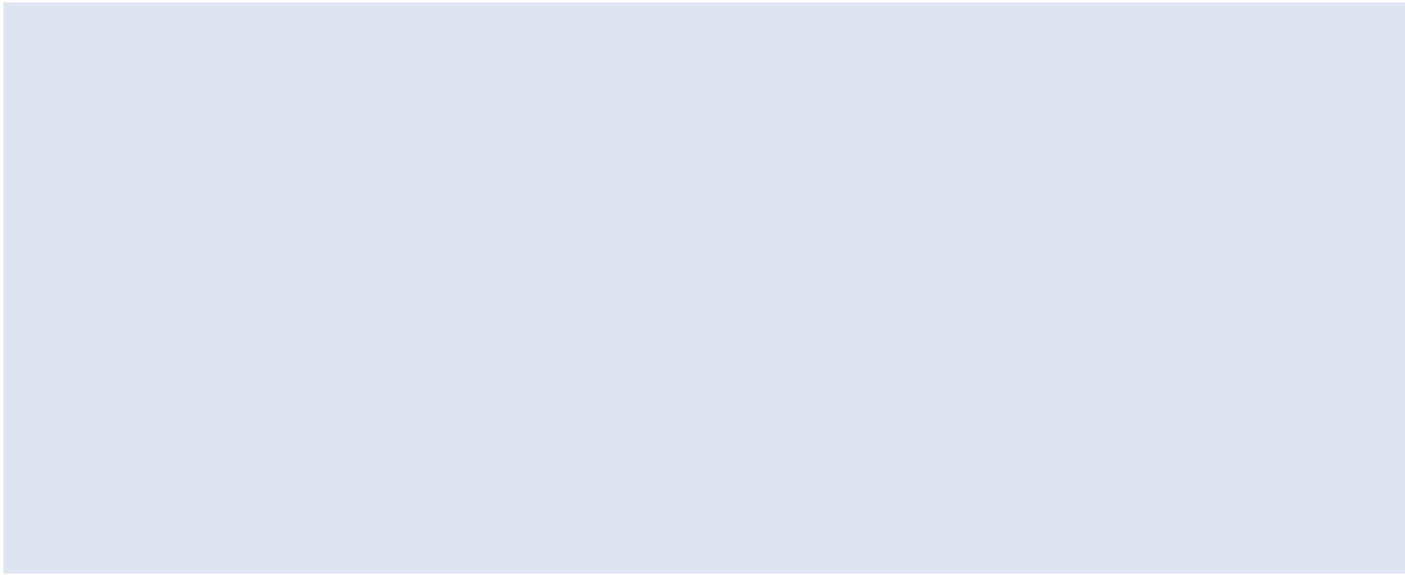


1A
1B

S2020

8510021320 / 1121427 ©2006, Pat. Nos. SecureScan® 5,018,767, 5,193,853, 5,707,083.
Pressure Seal 4,918,128. - 0221

0311Z



REMOVE DOCUMENT ALONG THIS PERFORATION

THIS DOCUMENT IS PRINTED IN TWO COLORS. DO NOT ACCEPT UNLESS BLUE AND BROWN ARE PRESENT.

MOOREWALLACE SECURITY MARK™ MOOREWALLACE SECURITY

MOOREWALLACE SECURITY MARK™ MOOREWALLACE SECURITY

VOID

SS REV 5 w/ DTP BACKGROUND (17%)

SEE REVERSE SIDE FOR
OPENING INSTRUCTIONS

SEE REVERSE SIDE FOR
OPENING INSTRUCTIONS

PROOF #1; 5-4-06

8510021320

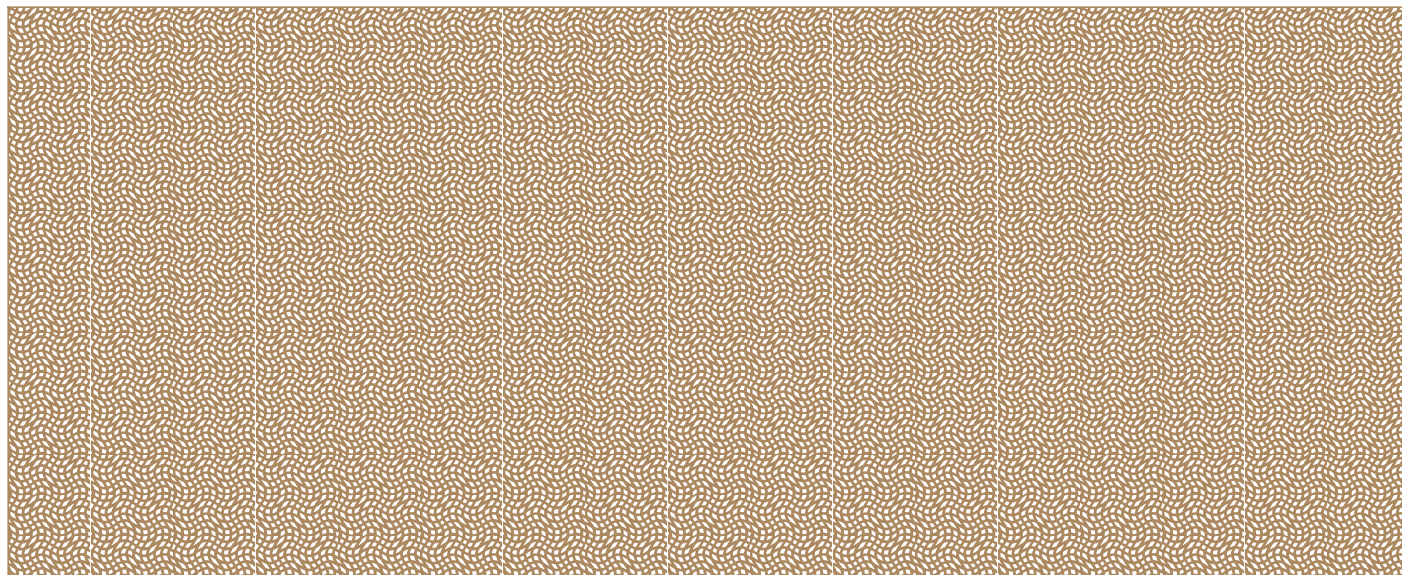
6 PARALLEL PERFS; SS-13; WARNING BAND SCREENED 60%, TOP PORTION SCREEN 10%.

B1A
B1B



② REMOVE SIDE EDGES FIRST
THEN FOLD, CREASE AND TEAR THIS STUB ALONG PERFORATION

① REMOVE THESE EDGES FIRST
FOLD, CREASE AND TEAR ALONG PERFORATION



① REMOVE THESE EDGES FIRST
FOLD, CREASE AND TEAR ALONG PERFORATION

DO NOT WRITE, STAMP OR ENDORSE BELOW THIS LINE

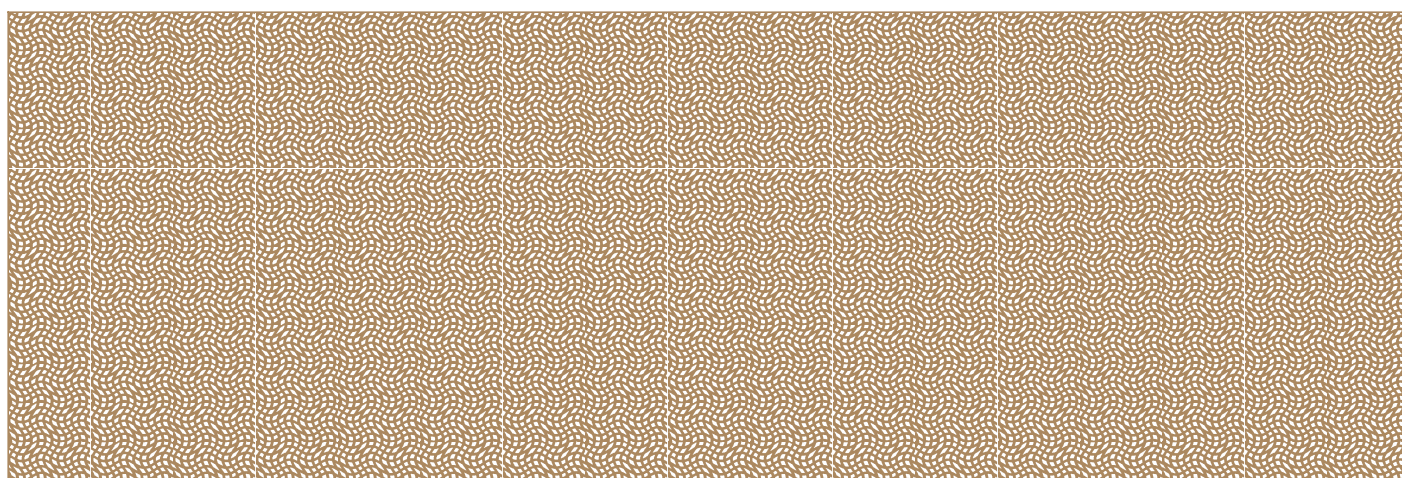
DO NOT ACCEPT IF SECURITY MARK IS ABSENT
ENDORSE HERE

HOLD AT ANGLE TO VIEW SECURITY MARK.

LOGOLINE

ENDORSEMENT
AREA 40%

SECURITY MARK



8510021320

REGULAR BACKER; PANTO AT 50%; LOGOLINE READS "MOOREWALLACE"; YELLOW REPRESENTS OPAQUE WHITE.